

## P3010



- ▶ Patented COAX® technology.
- ▶ Available with three-stage COAX® cartridge MINI. Choose an Si cartridge for extra vacuum flow, a Pi cartridge for high performance at low feed pressure or an Xi cartridge when high flow and deep vacuum is needed.
- ▶ Includes a flow-through silencer and a built-in vacuum filter for harsh environments.
- ▶ Suitable for fast and reliable evacuation in sealed systems.
- ▶ Slim, compact, configurable and modular design.
- ▶ Low weight.

### TECHNICAL DATA

Description	Unit	Value
Feed pressure, max.	MPa	0.7
Noise level	dB(A)	66–68
Temperature range	°C	-10–50
Weight	g	110–330
Material		PP, PA, NBR, Al, SS

### VACUUM FLOW

COAX® Cartridge	Feed pressure MPa	Air consumption NI/s	Vacuum flow (NI/s) at different vacuum levels (-kPa)										Max vacuum -kPa
			0	10	20	30	40	50	60	70	80	90	
Pi12-3	0.314	0.44	1.40	0.60	0.44	0.27	0.19	0.14	0.10	0.060	0.030	—	90
Si08-3	0.6	0.44	1.34	0.73	0.55	0.35	0.23	0.17	0.13	0.08	—	—	75
Xi10-3	0.5	0.46	1.43	0.70	0.50	0.33	0.19	0.15	0.11	0.07	0.045	0.011	94

For vacuum flows at other feed pressures, see COAX® Cartridge data sheets.

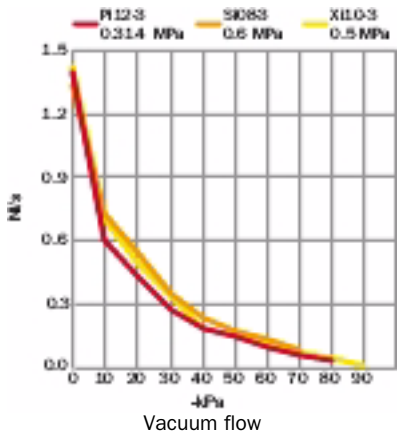
### EVACUATION TIME

COAX® Cartridge	Feed pressure MPa	Air consumption NI/s	Evacuation time (s/l) to reach different vacuum levels (-kPa)										Max vacuum -kPa
			10	20	30	40	50	60	70	80	90		
Pi12-3	0.314	0.44	0.08	0.23	0.49	1.00	1.70	2.60	3.90	6.30	—	—	90
Si08-3	0.6	0.44	0.10	0.25	0.48	0.80	1.30	2.30	4.60	—	—	—	75
Xi10-3	0.5	0.46	0.09	0.26	0.50	0.90	1.5	2.2	3.4	5.2	8.8	—	94

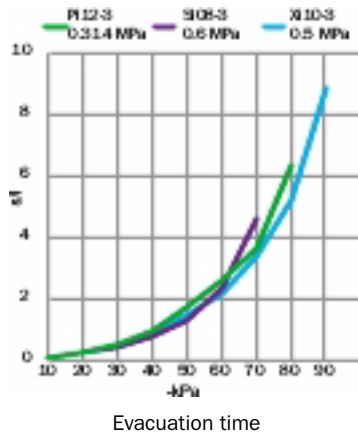
For evacuation times at other feed pressures, see COAX® Cartridge data sheets.

### BLOW FLOW

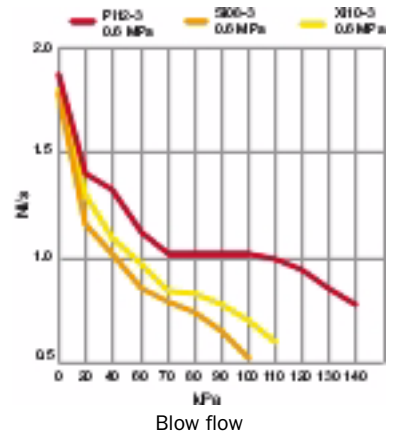
COAX® cartridge	Feed pressure MPa	Air consumption NI/s	Blow flow (NI/s) at different pressure levels (kPa)												Max pressure kPa
			0	20	40	60	70	80	90	100	110	120	130	140	
Pi12-3	0.6	0.75	1.87	1.4	1.33	1.12	1.03	1.03	1.03	1.03	1.0	0.95	0.86	0.79	140
Si08-3	0.6	0.44	1.78	1.16	1.03	0.86	0.80	0.75	0.66	0.53	—	—	—	—	70
Xi10-3	0.6	0.54	1.8	1.3	1.1	0.98	0.85	0.84	0.79	0.71	0.61	—	—	—	90



Vacuum flow



Evacuation time



Blow flow

Vacuum pumps P3010

## ORDERING INFORMATION

1. Select housing	P3010 Code
Housing, connection $\varnothing=6$ mm	00
Housing, connection 1/8" NPSF	01

2. COAX® cartridge modules	P3010 Code
COAX® cartridge module Pi12-3FSx1	AE
COAX® cartridge module Pi12-3FSx1, non-return valve	AF
COAX® cartridge module Pi12-3FSx2	AG
COAX® cartridge module Pi12-3FSx2, non-return valve	AH
COAX® cartridge module Si08-3FSx1	AA
COAX® cartridge module Si08-3FSx1, non-return valve	AB
COAX® cartridge module Si08-3FSx2	AC
COAX® cartridge module Si08-3FSx2, non-return valve	AD
COAX® cartridge module Xi10-3FSx1	AI
COAX® cartridge module Xi10-3FSx1, non-return valve	AJ
COAX® cartridge module Xi10-3FSx2	AK
COAX® cartridge module Xi10-3FSx2, non-return valve	AL

3. Select connection and function module	P3010 Code
B Connection module high 6x1/8"	01
A Connection module low 3x1/8"	02
Function Quick-release connection, 10 and 6 mm, 3 cm <sup>3</sup>	04
Function Quick-release connection, 8 and 6 mm, 30 cm <sup>3</sup>	05
Function Quick-release connection, 8 and 6 mm, 60 cm <sup>3</sup>	06
Function Quick-release connection, 10 and 6 mm, 30 cm <sup>3</sup>	07
Function Quick-release connection, 10 and 6 mm, 60 cm <sup>3</sup>	08
Function Quick-release connection, 1/4" NPSF and 6 mm, 3 cm <sup>3</sup>	09
Function Quick-release connection, 1/4" NPSF and 6 mm, 30 cm <sup>3</sup>	10
Function Quick-release connection, 1/4" NPSF and 6 mm, 60 cm <sup>3</sup>	11
Function Quick-release connection, 8 and 6 mm, 3 cm <sup>3</sup>	12
Function AVM™2 NO G connection	27
Function AVM™2 NC G connection	28
Function CU NC G connection	29

For detailed information on Quick-release, AVM™2 and CU, see separate datasheets.

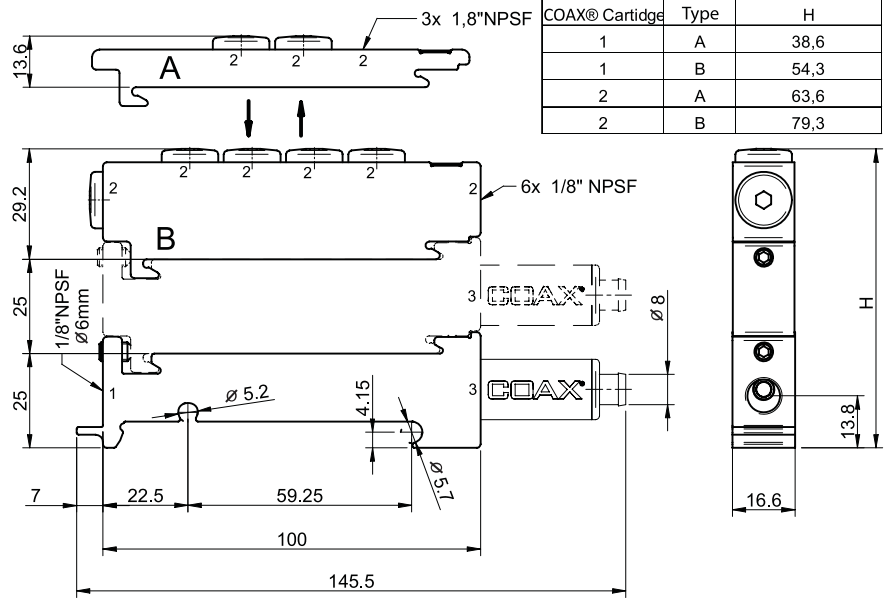
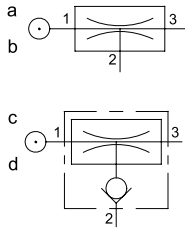
4. Select ES	P3010 Code
No energy saving	AA
Valve DS23	AB
ES Vacustat 2/2 NO, large hysteresis	AC
ES Vacustat 2/2 NO, small hysteresis	AD

For detailed information on Valve DS 23 and Vacustat, see separate datasheets.

5. Select vacuum sensing	P3010 Code
No vacuum sensing	00
Vacuum switch, adjustable, PNP NO MM8	01
Vacuum switch, adjustable, NPN NO MM8	02
Vacuum switch, adjustable, PNP NO LM8	05
Vacuum switch, adjustable, PNP NO DM8	09
Vacuum switch, adjustable, NPN NO DM8	10
Vacuum switch inductive, adjustable with knob	11
Vacuum switch VS4015 $\varnothing 6$ , 30 -kPa	18
Vacuum switch VS4015 $\varnothing 6$ , 50 -kPa	19
Vacuum switch VS4015 $\varnothing 6$ , 70 -kPa	20
Vacuum switch VS4016 G1/8" male, 30 -kPa	21
Vacuum switch VS4016 G1/8" male, 50 -kPa	22
Vacuum switch VS4016 G1/8" male, 70 -kPa	23

For detailed information on vacuum switches, see separate datasheets.

Example	Ordering number
Housing, connection $\varnothing 6$ mm Pi12-3FSx1, Connection module high 6x1/8", no energy saving, no vacuum sensing	P3010.00.AE.01.AA.00



## ORDERING INFORMATION, ACCESSORIES

Description	Art. No.
Sealing kit P3010, NBR	0104201

The sealing kit includes flap valves, compressed air filter and vacuum filter.

Vacuum pumps P3010