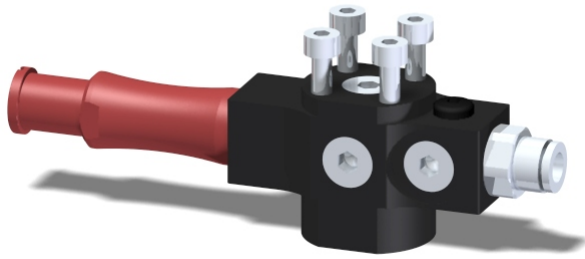


## Data sheet

# VGS™3010



- Patented COAX® technology
- VGS™ allows easy installation and flexible positioning with several mounting options.
- VGS™ is compatible with any suction cup with G3/8" male fitting from Piab's assortment. More information about a chosen suction cup or other available suction cups for a specific application can be found at; [www.piab.com](http://www.piab.com)
- The three-stage cartridge will give extra high initial vacuum flow, which is suitable in high speed applications.
- Xi cartridge chosen when there is need of high flow and deep vacuum.

### Technical data

Description	Unit	Value
Feed pressure, max	Mpa	0.7
Noise level range	dBA	60-74
Temperature range – conveyed material	°C	-10-80
Weight	g	190
Material	-	PP, PA, NBR, AL, SS

### Vacuum flow COAX® cartridge MINI Xi10-3

Feed pressure*	Air consumption	Vacuum flow (NI/s) at different vacuum levels (-kPa)										Max vacuum -kPa
		0	10	20	30	40	50	60	70	80	90	
0.5 MPa	0.46 NI/s	1.43	0.70	0.50	0.33	0.19	0.15	0.11	0.07	0.04	0.011	94

\*Feed pressure tolerance, +/- 0.01 MPa. For vacuum flows at other feed pressures, see COAX® cartridge data sheets.

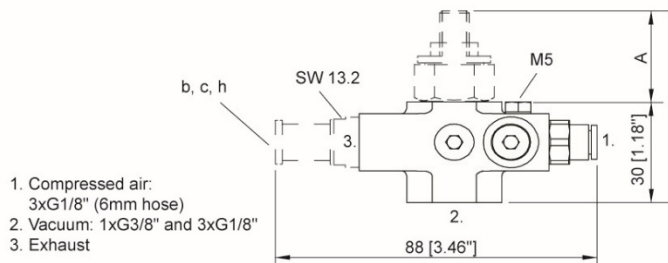
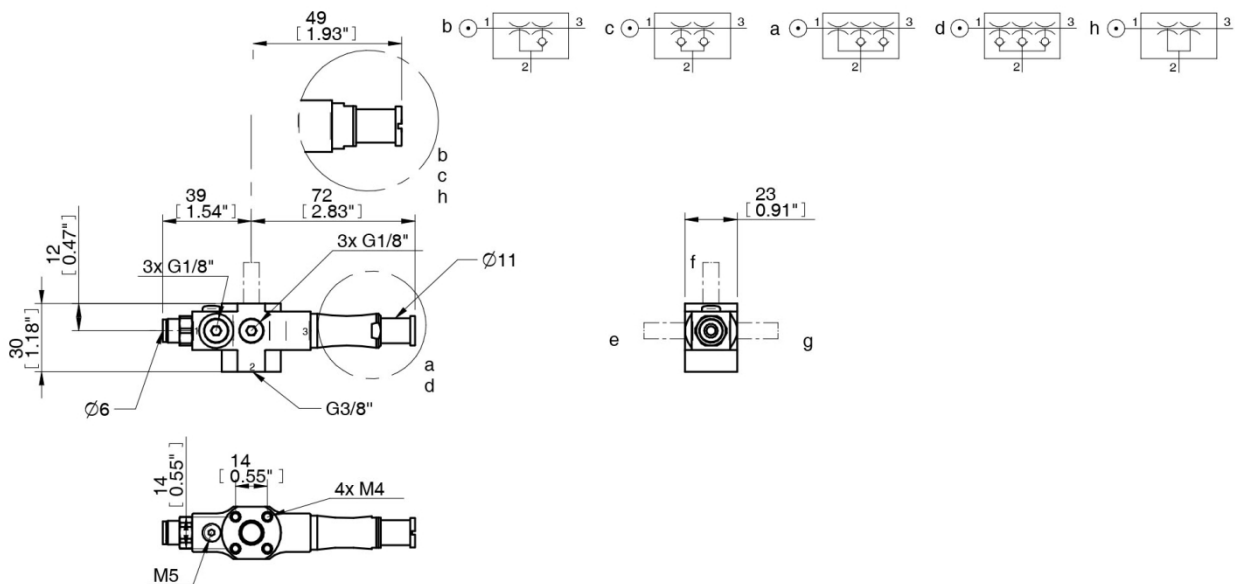
### Evacuation time COAX® cartridge MINI Xi10-3

Feed pressure*	Air consumption	Evacuation time (s/l) to reach different vacuum levels (-kPa)									Max vacuum -kPa
		10	20	30	40	50	60	70	80	90	
0.5 MPa	0.46 NI/s	0.09	0.26	0.50	0.90	1.5	2.2	3.4	5.2	8.8	94

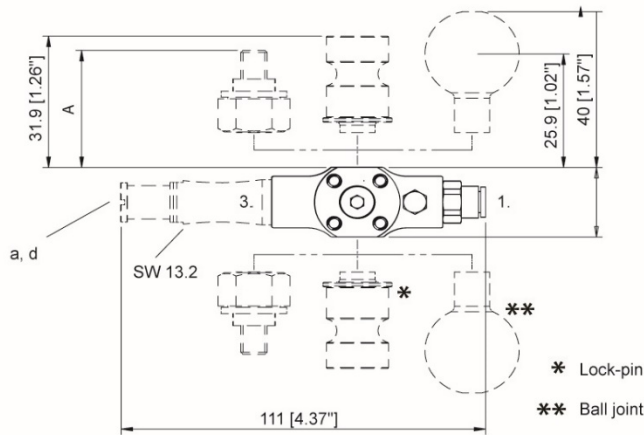
\*Feed pressure tolerance, +/- 0.01 MPa. For evacuation times at other feed pressures, see COAX® cartridge data sheets.

## Dimensional drawing

a = COAX® cartridge MINI Xi10-3



- 1. Compressed air:  
3xG1/8" (6mm hose)
- 2. Vacuum: 1xG3/8" and 3xG1/8"
- 3. Exhaust



Mounting	A (mm)
M8 / 16	16
M6 / 22	22
M8 / 27	27

## Ordering information – Current configuration

Description VGS™3010	Product code VGS3010.AK.00.BA
COAX® Cartridge	COAX® cartridge MINI Xi10-3
Mounting orientation	4x M4 top, flush mount
Suction cup	No suction cup