

# VGS™5010

Article number: VGS™5010\_



- Patented COAX® technology.
- The suction cups are specially designed for handling larger parts, such as car body sheets.
- Compatible with any suction cup with G1/2" male fitting. Suction cup ordered separately.
- Available with a two or three-stage COAX® cartridge MIDI. Choose an Si cartridge for extra vacuum flow, a Pi cartridge for high performance at low feed pressure or an Xi cartridge when high flow and deep vacuum is needed.
- The three-stage cartridge will give extra high initial vacuum flow, suitable in high speed applications.
- Easy installation and flexible positioning with several mounting options.

## Technical data

Description	Unit	Value
Material	-	Al, Nitrile (NBR), PA, SS
Temperature, max.	°C	80
Temperature, min.	°C	-10
Feed pressure, max.	MPa	0.7
Noise level, max.	dBA	83
Noise level, min.	dBA	73

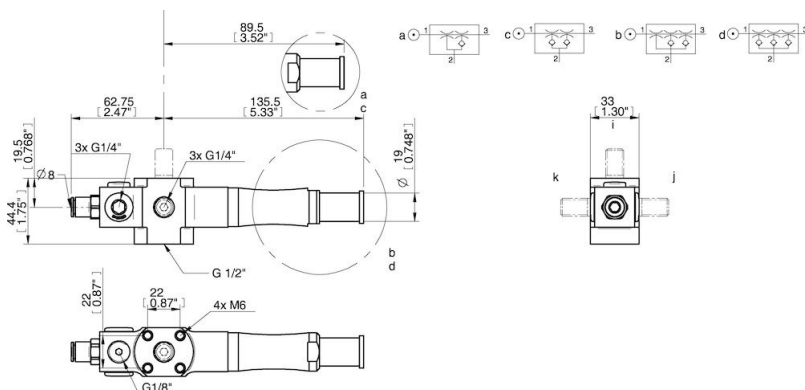
## Performance

Feed pressure MPa	Air consumption Nl/s	Vacuum flow (Nl/s) at different vacuum levels (-kPa)													Max vacuum kPa
		0	10	20	30	40	50	60	70	75	80	90	95	99	
0.3	2	2.8	2.5	1.8	1.1	0.65	0.5	0.35	0.25	0	0.1	0	0	0	≥90
0.31	2.05	5.6	2.5	1.8	1.1	0.65	0.5	0.35	0.25	0	0.1	0	0	0	≥90
0.6	1.75	3.3	3	2.6	1.7	0.9	0.6	0.5	0.35	0	0	0	0	0	≥75
0.6	1.75	6	3.5	2.6	1.7	0.9	0.6	0.5	0.35	0	0	0	0	0	≥75
0.45	1.83	2.8	2.3	1.6	1	0.73	0.58	0.43	0.32	0	0.18	0.03	0	0	≥95
0.45	1.83	5.9	3	2	1.3	0.73	0.58	0.43	0.32	0	0.18	0.03	0	0	≥95

Feed pressure MPa	Air consumption Nl/s	Evacuation time (s/l) to reach different vacuum levels (-kPa)													Max vacuum kPa
		10	20	30	40	50	60	70	80	90	95	99	99.5	100.3	
0.3	2	0.038	0.084	0.153	0.267	0.441	0.677	1.01	1.581	0	0	0	0	0	≥90
0.31	2.05	0.02	0.06	0.12	0.25	0.45	0.7	1	1.6	4	0	0	0	0	≥90
0.6	1.75	0.03	0.07	0.1	0.18	0.33	0.53	0.8	0	0	0	0	0	0	≥75
0.6	1.75	0.02	0.05	0.1	0.18	0.33	0.53	0.8	0	0	0	0	0	0	≥75
0.45	1.83	0.04	0.09	0.17	0.28	0.44	0.63	0.9	1.3	2.3	0	0	0	0	≥95
0.45	1.83	0.022	0.062	0.12	0.22	0.37	0.57	0.84	1.2	2.2	0	0	0	0	≥95

Feed pressure MPa	Air consumption Nl/s	Blow flow (Nl/s) at different pressure levels (-kPa)													Max pressure kPa	
		0	10	20	30	40	50	60	70	80	90	100	110	120		130
0.6	1.75	5.05	4.83	4.25	3.61	3.3	2.89	2.65	2.35	1.97	0	0	0	0	0	≥75
0.6	1.75	7.8	5.4	4.6	3.8	3.3	3.1	2.7	2.3	1.8	0	0	0	0	0	≥75

## Dimensional drawings



**Values specified in this data sheet are tested at (unless otherwise stated):**

- Room temperature (20°C [68°F] ± 3°C [5.5°F]).
- Standard atmosphere (101.3 [29.9 inHg] ± 1.0 kPa [0.3 inHg]).
- Compressed air quality, DIN ISO 8573-1 class 4.